

HDMI – SDI Converter

HDMI to SDI and SDI to HDMI Converters



WirelessKable Inc.

Proudly Made in CANADA with domestic and imported parts

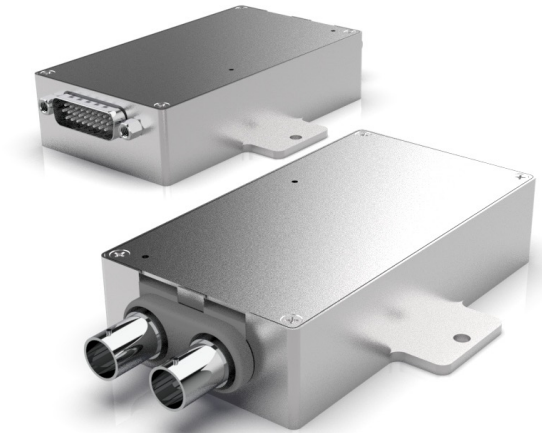
Document Revision: A

SPECIFICATIONS

Input Voltage	5 VDC
Input Current	0.2 A
HDMI	720p50, 720p59.94, 720p60 1080p23.98, 1080p24, 1080p25, 1080p29.97, 1080p30, 1080p47.95, 1080p48, 1080p50, 1080p59.94, 1080p60 1080i50, 1080i59.94, 1080i60
SDI	525i59.94 NTSC, 625i50 PAL SMPTE 259M, SMPTE 292M, SMPTE 296M, SMPTE 424M, SMPTE 425M
HDMI Interface	D-Sub 26 HD
SDI Interface	BNC
Color Precision	4:2:2
Color Space	YUV
Auto Switching	Automatically detects SD, HD and 3GSDI
Weight	0.286 lb (130 g)
Dimensions	Product 2.1" W / 3.76" L / 0.9" H
Mounting	Flange
Certification	RTCA DO-160G
Applications	Aerospace, Automotive, Military
Appearance	Standard - Gray Anodized
Used With	551-5017-001 - 5VDC20 551-5607-001 - USB-C to HDMI
Copy Protection	HDMI input is unable to capture from copy-protected HDMI sources.
MTBF	300,000 Hours

ORDERING INFORMATION

Part Number	551-5707-001
Description	HDMI to SDI Converter
Part Number	551-5707-002
Description	SDI to HDMI Converter



DESCRIPTION

Those products are designed to connect HDMI devices and computers to professional SDI equipment or to extend HDMI connectivity over a single coax cable.

FEATURES

- Can use existing coax cable from old cabin system (50 ohms)
- A simple way to extend the HDMI signal over the cabin
- Cost-effective solution